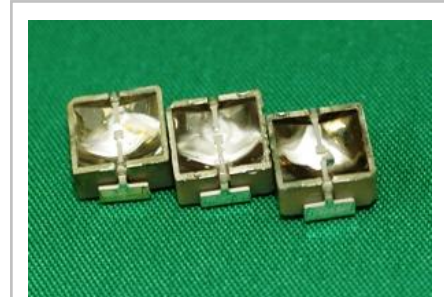


**REFLECTIVE MIRROR TYPE LED
AOP2-9505P1**

Infrared LED

◆ Die & Package

Item	Value
Peak wavelength (typ)	950nm
Die Materials	GaAlAs
Package	Reflective Mirror inside



◆ Absolute Maximum Ratings

Ta = 25°C

Parameter	Symbol	Value	Unit
Power Dissipation	P _D	140	mW
Forward Current (DC)	I _F	100	mA
Pulse Forward Current (**)	I _{FRM}	600	mA
Reverse Voltage (DC)	V _R	5	V
Operating Temperature	T _{opr}	-30 ~ +80	°C
Storage Temperature	T _{stg}	-30 ~ +90	°C

** I_{FRM}: PW(Pulse width) ≤ 100 μ sec, duty ≤ 1/100

◆ Electro-optical Characteristics

Ta = 25°C

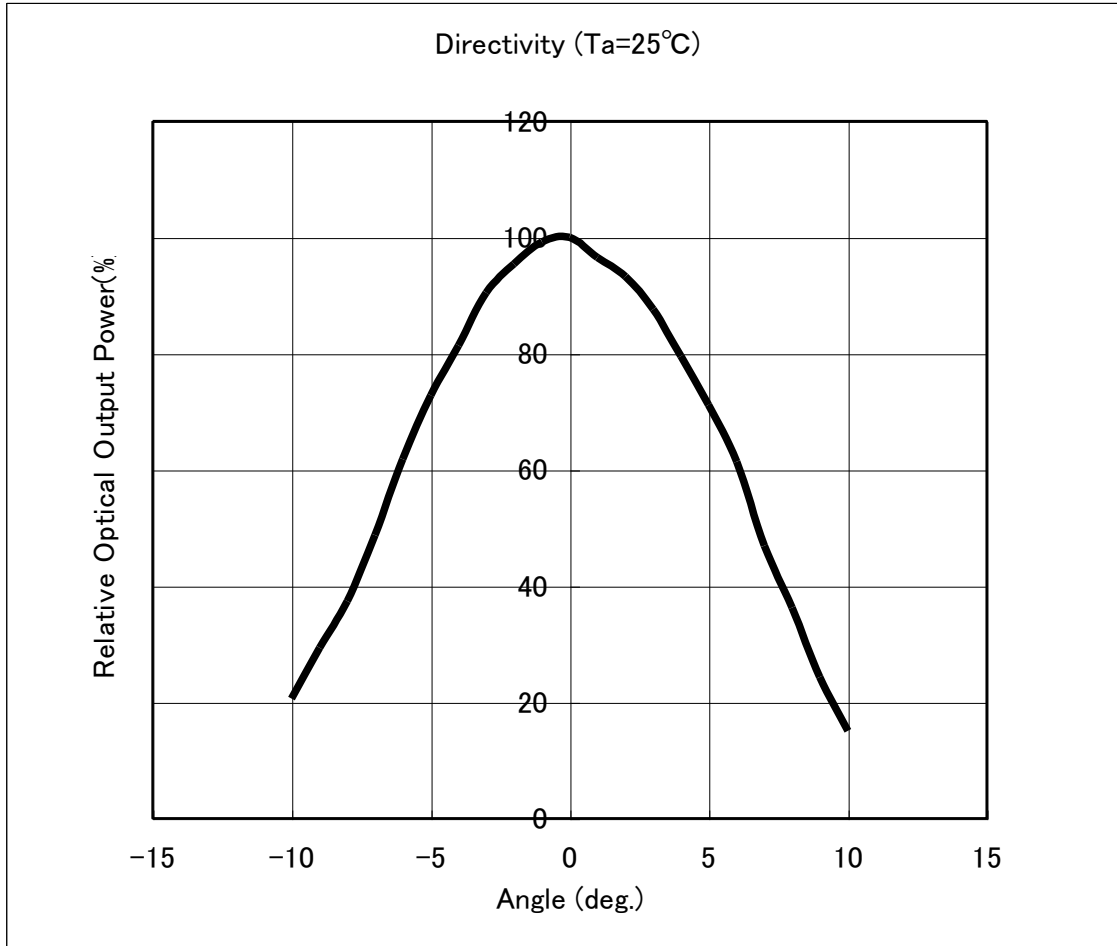
Parameter	Symbol		Value	Unit	
Forward Voltage	V _F	Typ	1.35	V	I _F = 50mA
		Max	1.75		
Reverse Current	I _R	Max	10	μ A	V _R = 5V
Peak Wavelength	λ _p	Min	940	nm	I _F = 50mA
		Typ	950		
		Max	960		
Spectral Half width	Δλ	Typ	30	nm	I _F = 50mA
Optical Output Power	P _O	Min	25	mW	I _F = 50mA
		Typ	35		
Peak Radiant Intensity	I _E	Min	200	mW/sr	I _F = 50mA
		Typ	350		
Viewing Half angle at 50%	θ 1/2	Typ	±7	°	I _F = 50mA
Response Time	Tr / Tf	Typ.	25.0	ns	

The data is subject to change without notice.

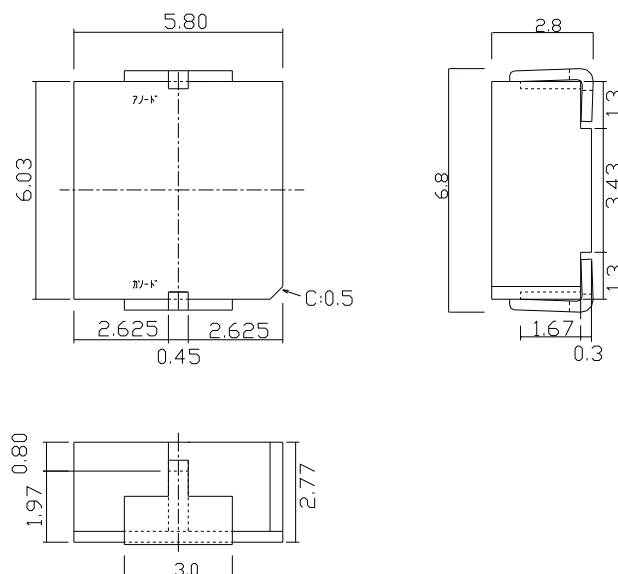
REFLECTIVE MIRROR TYPE LED
AOP2-9505P1

Infrared LED

◆ Directivity



◆ Mechanical Specification (Dimension) Unit=mm / ±0.3mm



The data is subject to change without notice.

**REFLECTIVE MIRROR TYPE LED
AOP2-9505P1**

Infrared LED

◆ Electro-Optical Characteristics

